

# Safety syringe

## INJECTION INSTRUCTIONS FOR PATIENTS



- ✓ **Safe use**  
due to automatic protection mechanism
- ✓ **Safe, simple manipulation**  
due to an easier-to-grip syringe and better legibility
- ✓ **Safe disposal**

A service by



**sanofi aventis**

Because health matters

Sanofi-Aventis Deutschland GmbH  
Potsdamer Straße 8  
10785 Berlin

229-100-047-319287-4135

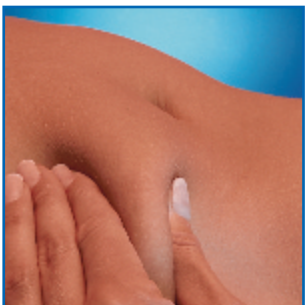
## SIMPLE PREPARATION



- 1 Disinfect the selected puncture point with an alcohol swab.



- 2 Pull the safety cap evenly off the needle. Shake drops off the needle tip; do not wipe.



- 3 Pinch the skin at the disinfected site between index finger and thumb.

## SIMPLE INJECTION



- 4 Insert the needle at an angle of 90 degrees. It is important that the entire dose be administered thus activating the protective mechanism.



- 5 Slowly pull the needle out. This causes the protective wings to close automatically over the needle and enclose it. Only then let go of the skin.



- 6 The syringe can now be disposed of without danger.